

PART OF THE NE 1/4, OF SECTION 23, T.5N., R.1W., S.L.B. & M.
WOODLAND ESTATES SUB UNIT 2 3RD AMD

767

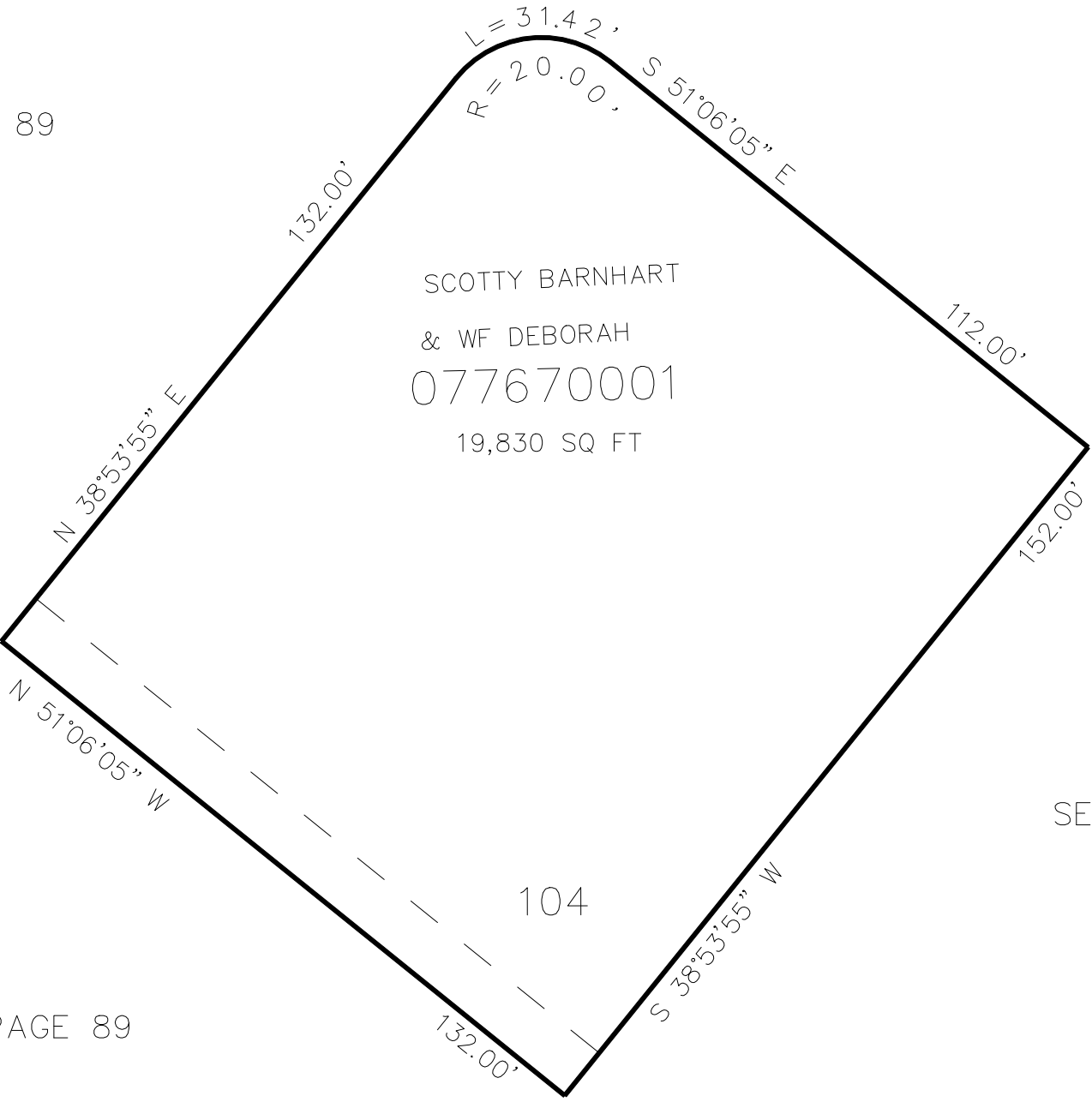
TAXING UNIT: 159

IN WEBER COUNTY
SCALE 1" = 30'

SEE PAGE 89

SEE PAGE 89

SEE PAGE 89



SEE PAGE 89

SEE PAGE 89

10' UTILITY & DRAINAGE EASEMENTS EACH
SIDE OF PROPERTY LINES AS INDICATED
BY DASHED LINES EXCEPT AS OTHERWISE
SHOWN.

FOR COMPLETE ENG DATA SEE
ORIGINAL DEDICATION PLAT IN
BOOK 78, PAGE 56 OF RECORDS.